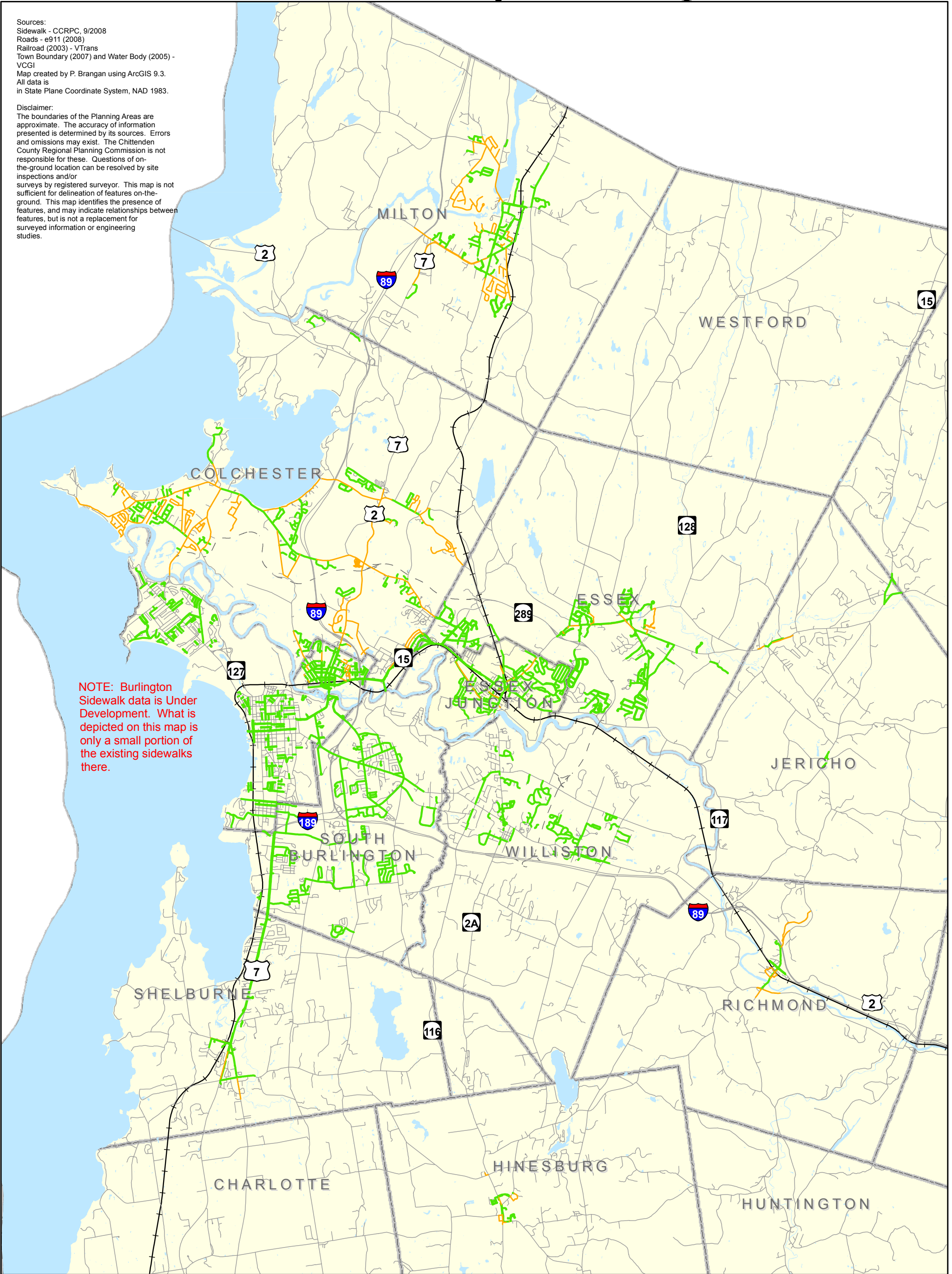


2008 Sidewalks Pedestrian & Bicycle Plan Update

Sources:
Sidewalk - CCRPC, 9/2008
Roads - e911 (2008)
Railroad (2003) - VTrans
Town Boundary (2007) and Water Body (2005) - VCGI
Map created by P. Brangan using ArcGIS 9.3.
All data is in State Plane Coordinate System, NAD 1983.

Disclaimer:
The boundaries of the Planning Areas are approximate. The accuracy of information presented is determined by its sources. Errors and omissions may exist. The Chittenden County Regional Planning Commission is not responsible for these. Questions of on-the-ground location can be resolved by site inspections and/or surveys by registered surveyor. This map is not sufficient for delineation of features on-the-ground. This map identifies the presence of features, and may indicate relationships between features, but is not a replacement for surveyed information or engineering studies.

NOTE: Burlington Sidewalk data is Under Development. What is depicted on this map is only a small portion of the existing sidewalks there.

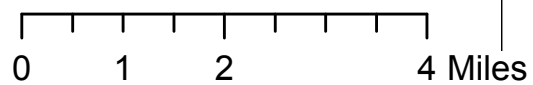


Legend

- | | |
|----------|-----------------|
| Sidewalk | Road Centerline |
| Existing | Proposed Road |
| Proposed | Railroad |



1:120,000



September 15, 2008